



**Weill Cornell  
Medicine**  
Surgery

*Lower Manhattan*  
**Thyroid FNA Clinic**



**Now Offering**

- Ultrasound guided FNA for thyroid nodules
- Molecular assays for indeterminate thyroid nodules available

**Which thyroid nodules require FNA?**

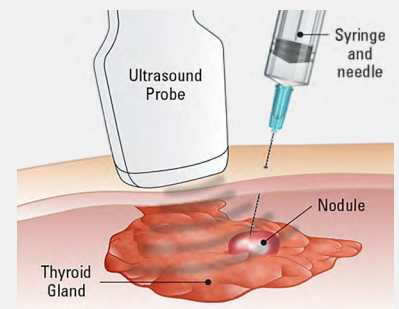
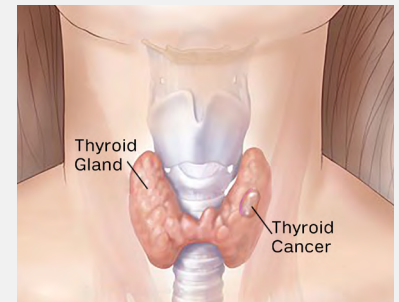
In general, thyroid nodules under 1 cm do not require FNA. Suspicious appearing nodules > 1 cm, and most nodules > 2 cm should be biopsied.

**What does the thyroid FNA procedure entail?**

With ultrasound guidance, the fine needle aspiration (FNA) is performed with a very thin needle, sampling the nodule. Slides are then sent to pathology for interpretation.

**What can I expect from a thyroid FNA result?**

Most (>70%) of thyroid nodules turn out to be benign. Fewer than 5% are malignant. Roughly 15-25% are "indeterminate" after the FNA. In these cases, new molecular assays are available at WCM and will be sent if clinically indicated.



**Jennifer L. Marti, MD, FACS**

Site Director, Breast & Endocrine Surgery  
NYP/Lower Manhattan Hospital  
Weill Cornell Medicine

**Appointments**

646-962-5213

646-962-0157

weillcornell.org/jennifer-marti-md

**Make an appointment  
today at one of  
Dr. Marti's locations:**

156 William Street, 12<sup>th</sup> floor  
New York, NY 10038

41 Elizabeth Street, Suite 507  
New York, NY 10013

263 7th Avenue, Suite 4H  
Brooklyn, NY 11215